

sheet  
fed offset  
edition

This PDF file is a print sample. To judge the quality of the GMG InkOptimizer, we recommend to order a printed sample for free.  
  
[Click here](#)

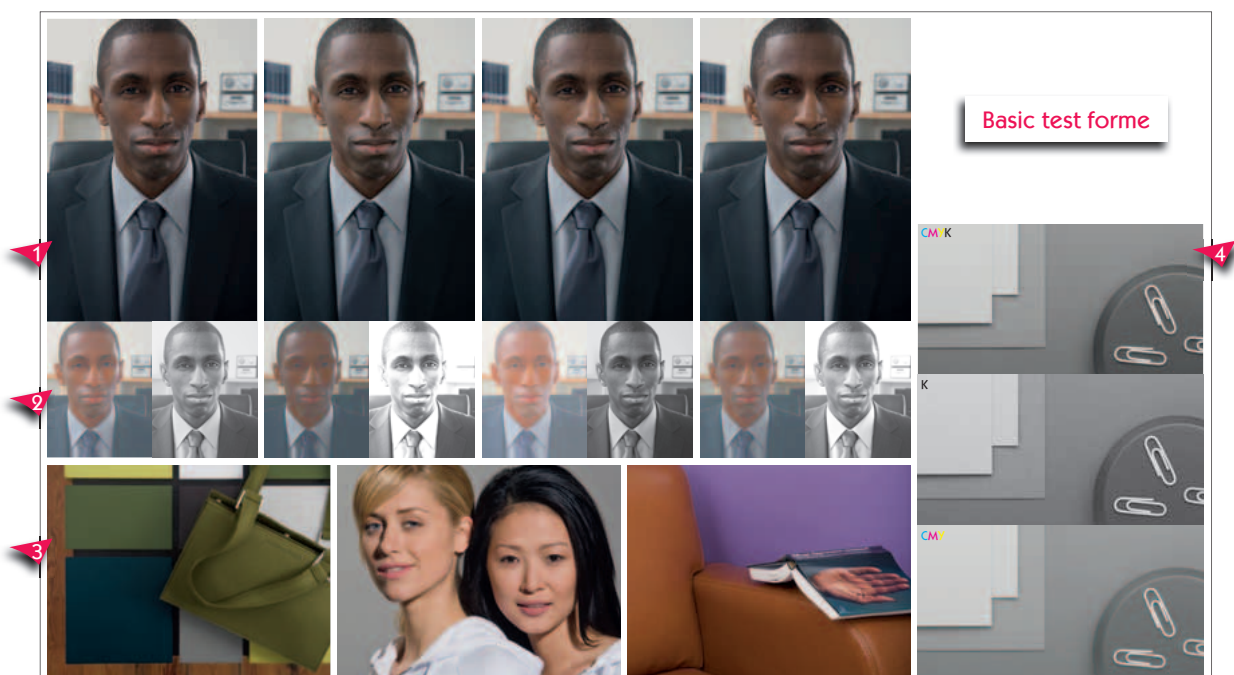
# gmg inkOptimizer

## Notes on the GMG InkOptimizer Print Sample

A minor cause can have a major effect: GMG InkOptimizer is a software solution for fully automatic ink reduction of individual images or whole pages. While retaining the same colour impression, the CMY colour component is reduced and the black component increased at the same time. No visual or colorimetric difference between ink-optimised and non-ink-optimised images can be determined on the monitor or the proof. **However, ink-optimised and non-ink-optimised data behave very differently on the press.** This becomes apparent when matching the colours of the GMG Print Sample.

### Design of the GMG InkOptimizer Print Sample

The GMG InkOptimizer Print Sample consists of the basic test forme below: **1** This image was separated according to ISOcoated\_v2 using different, conventional ICC profiles. Since the separation settings (black composition, UCR/GCR, etc.) are defined when creating the profile, different CMY and K colour separations **2** are obtained for the same image. Also included are test images for checking tertiary colours and skin tones **3**, as well as a test image for checking the grey balance **4**, with the corresponding CMY and K separations.





The basic test forme was processed using GMG InkOptimizer. The basic test forme was positioned at the bottom left of the printing forme, and the ink-optimised test forme at the top left. The right-hand side contains the ink-optimised test forme as a reference. On the press, the ink screws were opened further on the left-hand side, once for magenta (Print Sample Magenta) and once for cyan (Print Sample Cyan), i.e. a higher density was used on the left in each case. **Now place the two left-hand sides of the samples next to each other:**

- The higher magenta or cyan density results in the colours of the basic test formes on the two print samples differing significantly from each other. Similarly, the grey balance shows a clear magenta or cyan colour cast.

- **The ink-optimised test formes remain stable in relation to each other, despite the higher magenta or cyan density on the two print samples.**

**No conflict between quality, time and cost**

Ink-optimised data substantially improve the quality of your print product in that:

- The colour composition is harmonised,
- Colour variations are reduced,
- It takes less time to get the right colours on the press,
- Less waste is produced,
- Production printing is very stable,
- Repeat jobs can be reproduced better,
- The lower level of ink application reduces offsetting,
- Less powder is needed,
- The drying time is shorter.



GMG GmbH & Co. KG, Moempelgarder Weg 10, 72072 Tuebingen, Germany.  
Tel +49 (0) 7071 93874-0, Fax +49 (0) 7071 93874-22, info@gmgcolor.com, www.gmgcolor.com.

© 2008 GMG GmbH & Co. KG. GMG, the GMG logo and GMG DotProof are (registered) trademarks of GMG GmbH & Co. KG. All other names and products are (registered) trademarks of the respective company and expressly acknowledged as such. Subject to technical and other alterations.

Ink-optimized / Printed with high magenta density

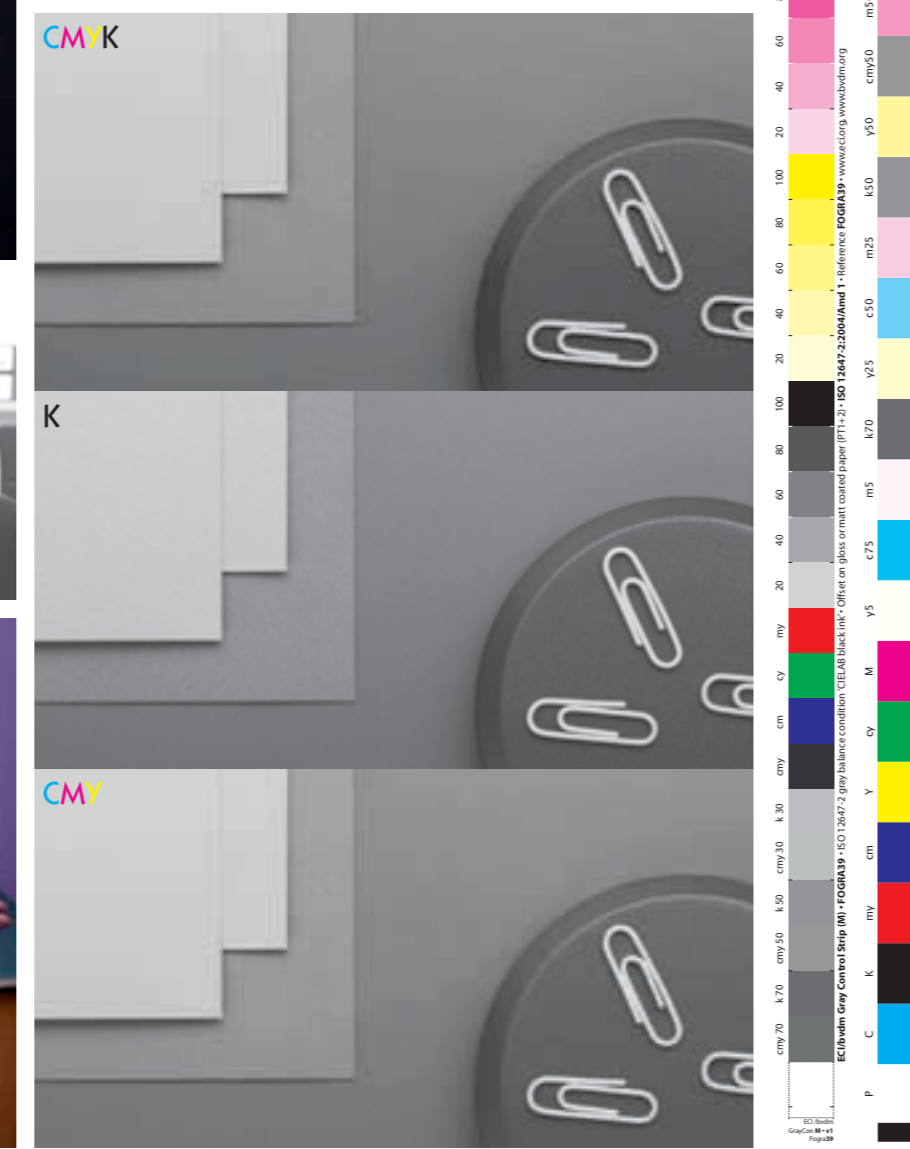


GMG InkOptimizer

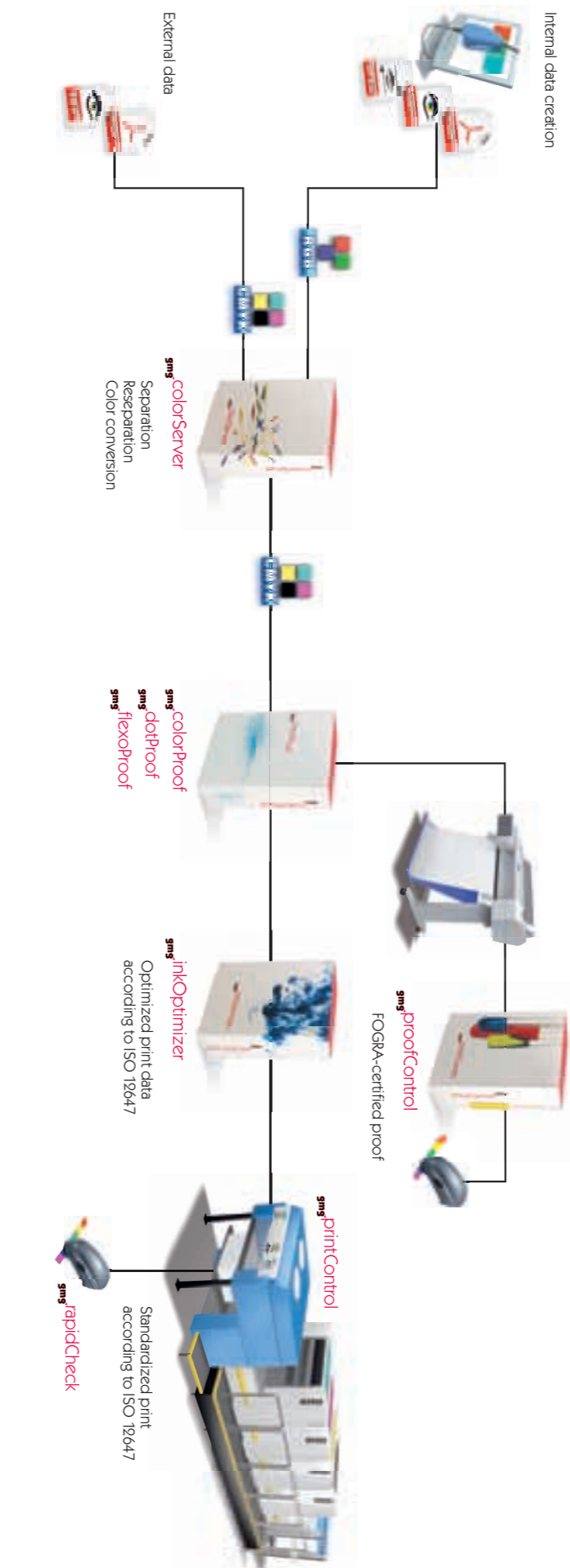
Page optimized using profile:  
IO\_ISOcoated\_V2\_39L\_TAC330\_G1\_V1.mxd

Ink coverage:  
Cyan: 13% Magenta: 15%  
Yellow: 15% Black: 41% Total: 84%

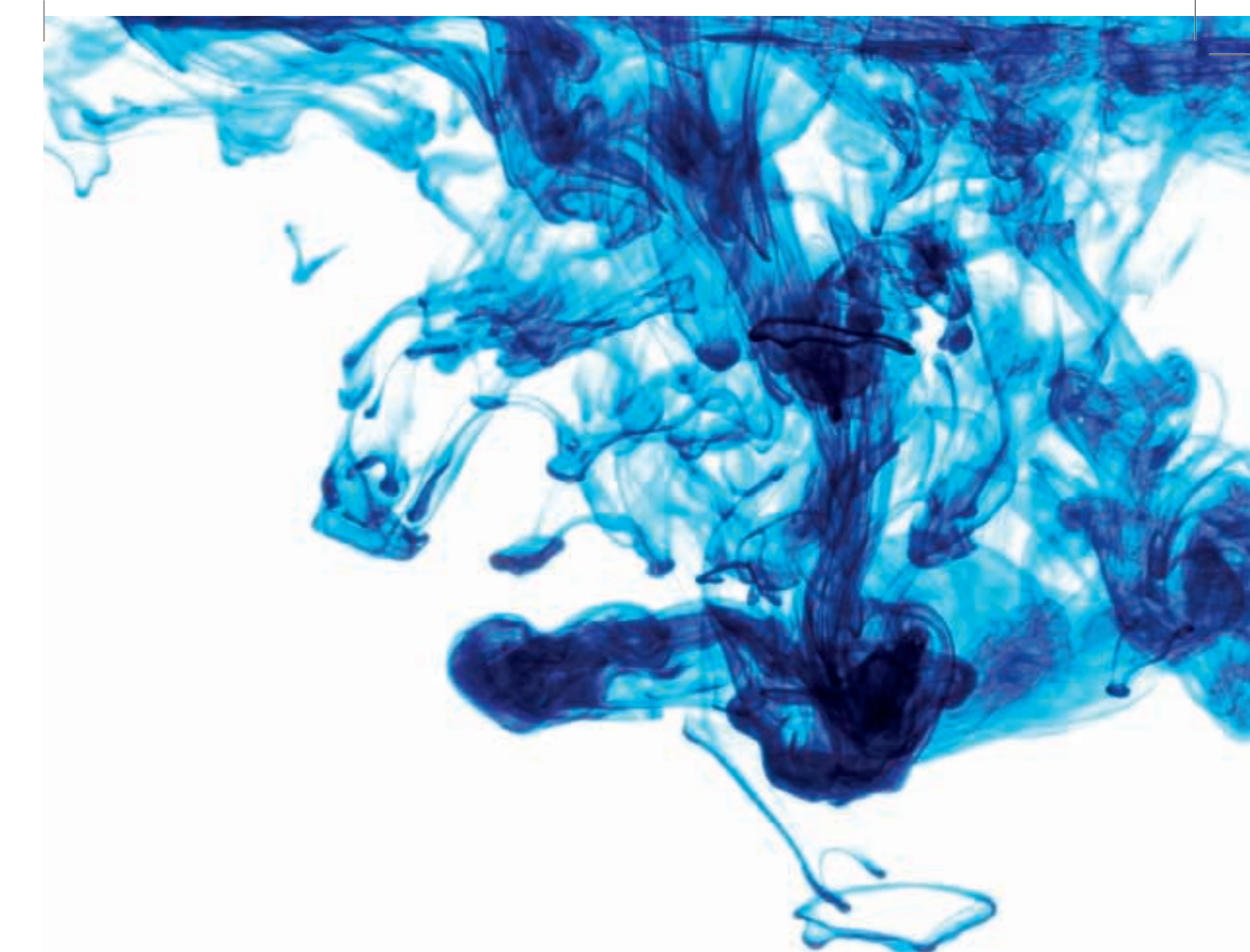
Reduction on this page:  
Cyan: -61% Magenta: -52%  
Yellow: -52% Black: +71% Total: -29%



K  
CM  
K  
CY



GMG Color Management Workflow



gmg<sup>inkOptimizer</sup>  
Print Sample

Original Separation / Printed with high magenta density

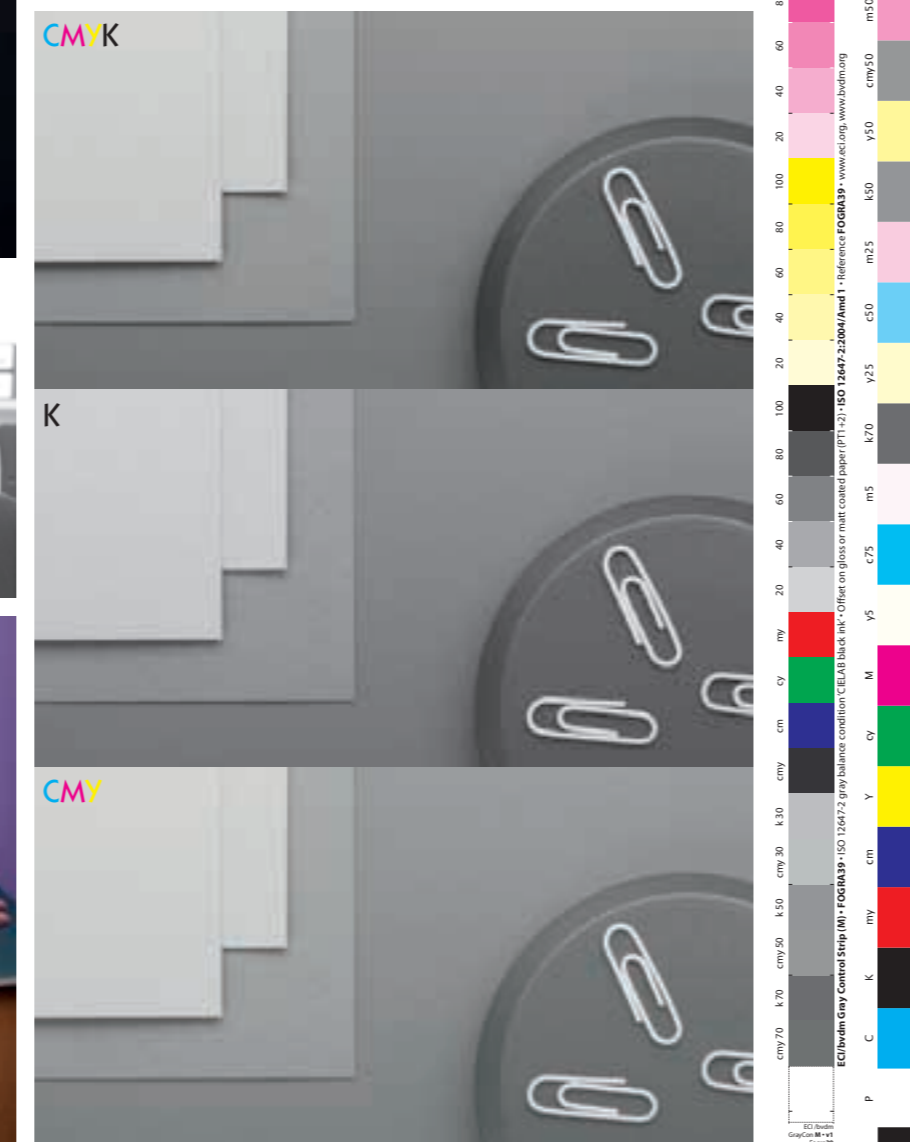


GMG InkOptimizer

This page shows possible separations in daily production.

Ink coverage:  
Cyan: 33% Magenta: 31%  
Yellow: 31% Black: 24% Total: 119%

Press: KBA Rapida 162-5  
Ink: K+E Novaboard  
Paper: IGEPA Profi Silk 135g/m<sup>2</sup>



K  
CM  
K  
CY

Ink-optimized / Printed with normal density

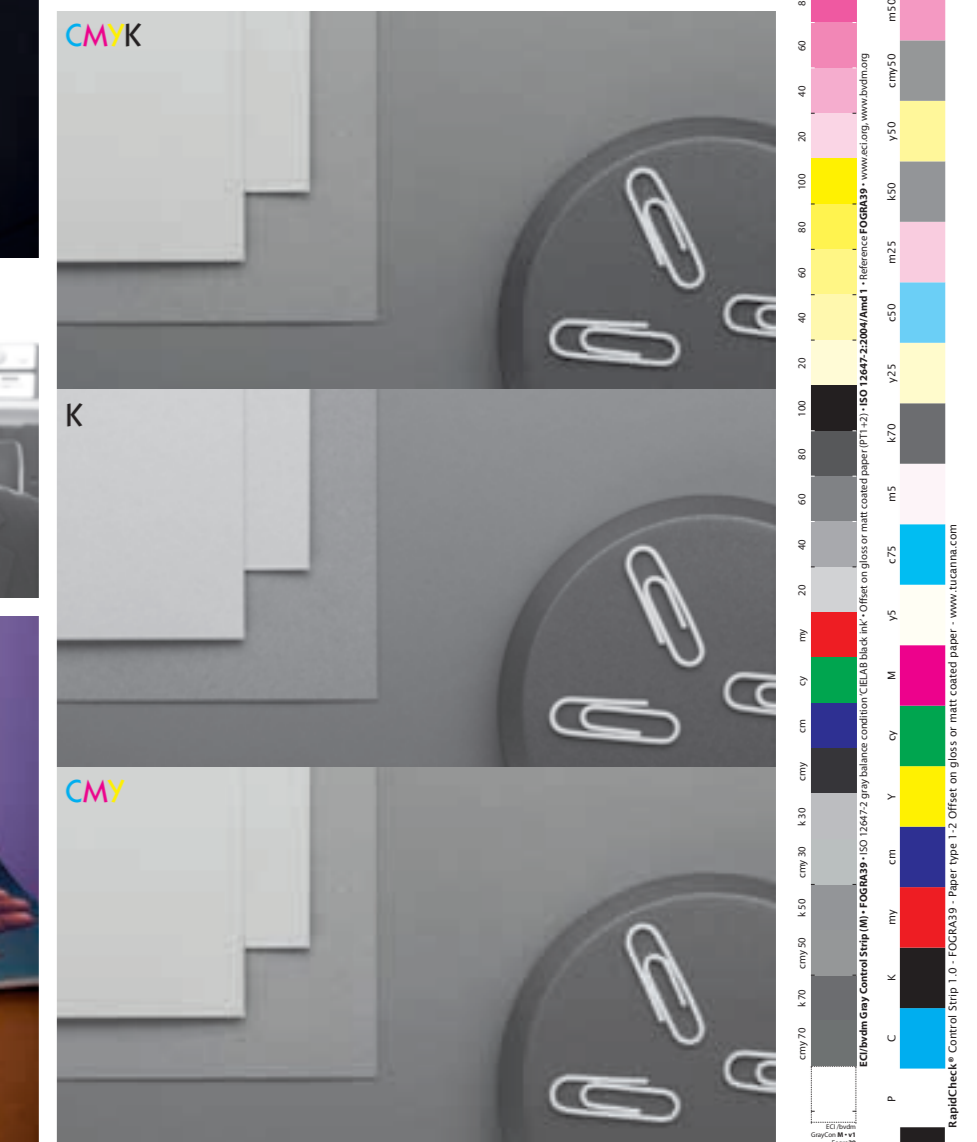


GMG InkOptimizer

Page optimized using profile:  
IO\_ISOcoated\_V2\_39L\_TAC330\_G1\_V1.mxd

Ink coverage:  
Cyan: 13% Magenta: 15%  
Yellow: 15% Black: 41% Total: 84%

Reduction on this page:  
Cyan: -61% Magenta: -52%  
Yellow: -52% Black: +71% Total: -29%



K  
CM  
K  
CY





## Contact us

Company

Branch

Photographer  
Agency  
Prepress  
business  
Publishing  
house

Print buyer  
Press/  
Journalist  
Consultant

Printer:

Sheet fed  
Digital print  
Flexo  
Web offset  
Screen print  
Gravure

Commercial printing  
Labels  
Packaging  
Newspaper  
Other printing  
technology  
Other application

Salutation\*

Title

Last Name\*

First Name\*

Position / Function

Adress\*

Zip/Postal Code\*

City\*

Country\*

State

Phone\*

Mobile

Fax

E-Mail\*

Product

Reason\*

Your message

Subscribe the GMG  
beam newsletter\*

Yes

No

Language for the  
newsletter

Please make sure you have filled in the fields marked with \* before you send us this form. We require this information in order to send you the requested information.